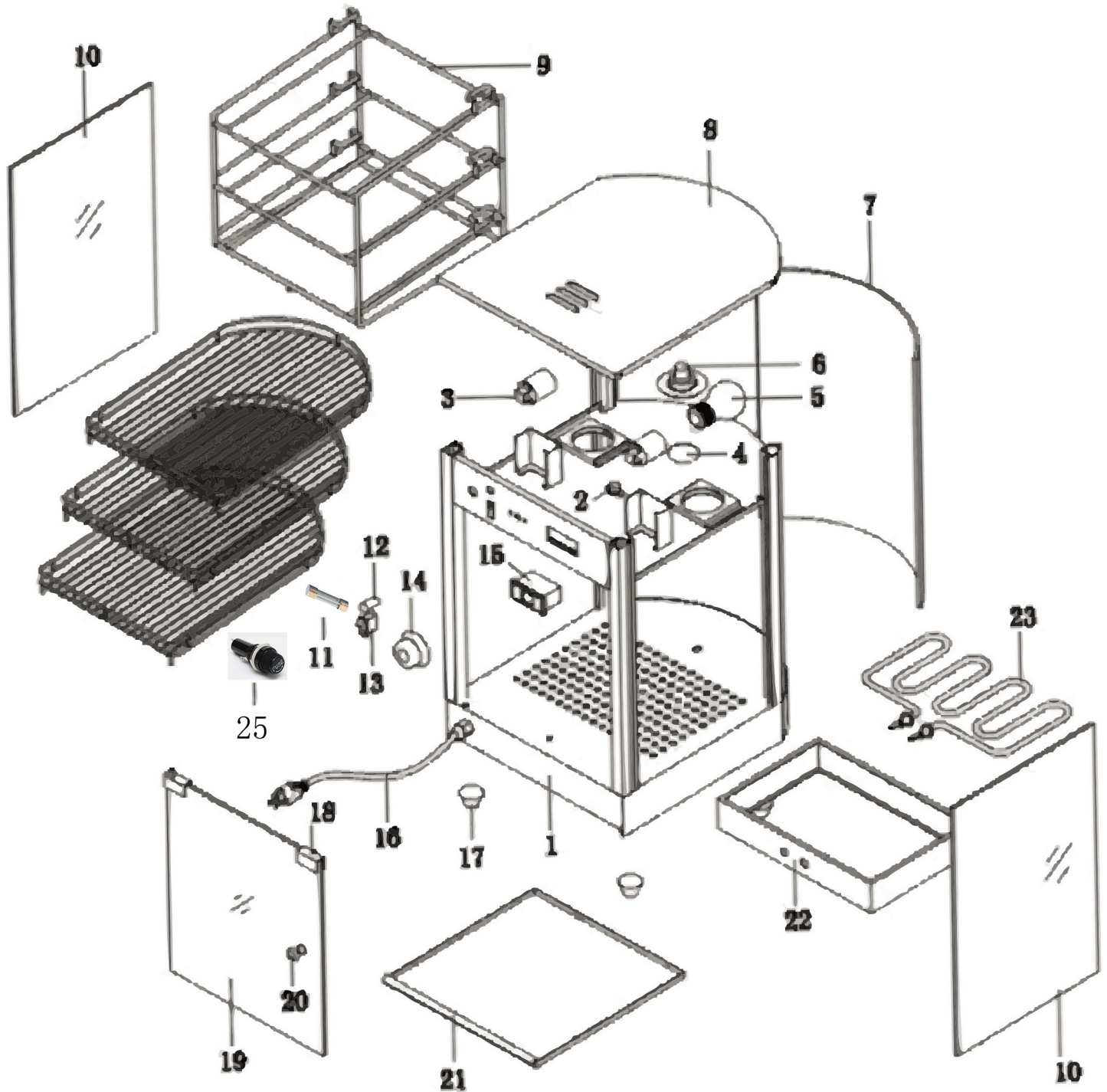


Parts Breakdown

Model DW-CN-0349 21829



Parts Breakdown

Model DW-CN-0349 21829

| Item No. | Description | Position | Item No. | Description | Position | Item No. | Description | Position |
|----------|-------------------------------|----------|----------|----------------------------------|----------|----------|--------------------------------|----------|
| 24680 | Shell for 21829 | 1 | 24692 | Side Glass for 21829 | 10 | 23508 | Door Magnet Hardware for 21829 | 18 |
| 24687 | Temperature Limiter for 21829 | 2 | 24171 | Fuse 5 Amp for 21829 | 11 | 24686 | Glass Door for 21829 | 19 |
| 24487 | Ceramic Lamp Holder for 21829 | 3 | AK444 | Fuse 10 Amp for 21829 | 11 | 24685 | Door Handle for 21829 | 20 |
| 24694 | Diaphanous Glass for 21829 | 4 | 24689 | Indicator Light for 21829 | 12 | 24682 | Oil Basin for 21829 | 21 |
| 24693 | 40W Light for 21829 | 5 | 24688 | On / Off Switch for 21829 | 13 | 24699 | Heater Box for 21829 | 22 |
| 24695 | Halogen Light for 21829 | 6 | 25172 | Temperature Controller for 21829 | 14 | 24700 | Heater for 21829 | 23 |
| 24696 | Curved Glass for 21829 | 7 | 24691 | Temperature Display for 21829 | 15 | 24684 | Shelve for 21829 | 24 |
| 24697 | Top Cap for 21829 | 8 | 24746 | Plug and Power Cord for 21829 | 16 | AL231 | Fuse Holder for 21829 | 25 |
| 24683 | Bracket Shelf for 21829 | 9 | 24698 | Plastic Foot for 21829 | 17 | | | |